

SPEED

RELIABILITY

SPECIFICITY



MICA
Fluorescence

Legionella

Legionella pneumophila



Domestic Hot Water (DHW)
Cooling Tower Water

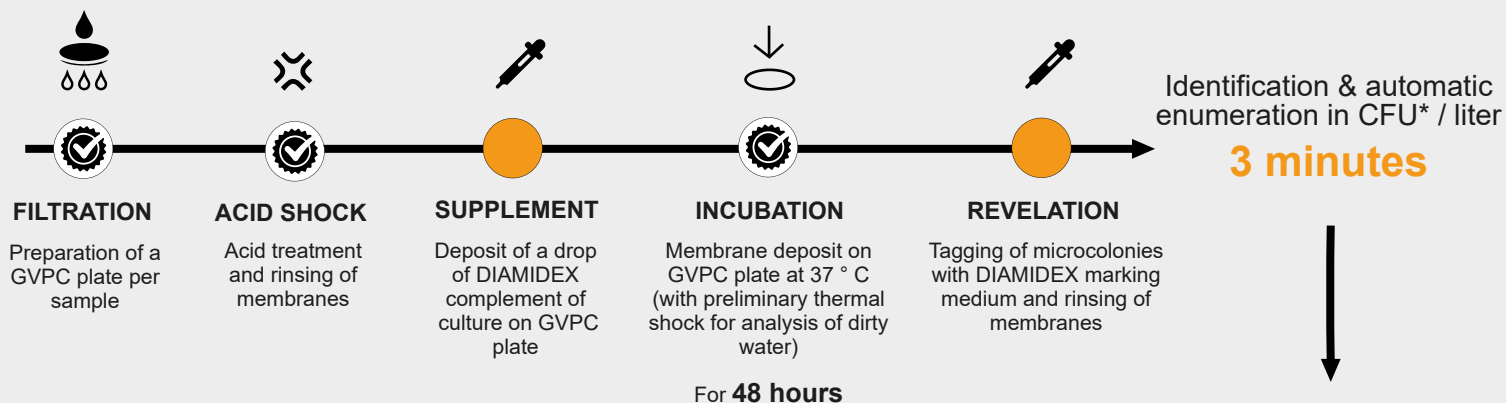
- ✓ 48 hours of incubation only, against 10 to 14 days with the standard method
- ✓ Same procedure as the standard method ISO 11731
- ✓ Detects and counts exclusively *L. pneumophila*, all serogroups
- ✓ Only one GVPC plate per sample
- ✓ Limit of detection:
10 CFU* / liter for DHW
100 CFU* / liter for cooling tower



AOAC certification
in progress



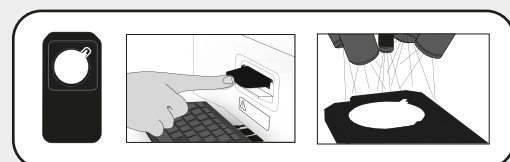
Protocol based on the ISO 11731 method



*CFU : Colony Forming Unit

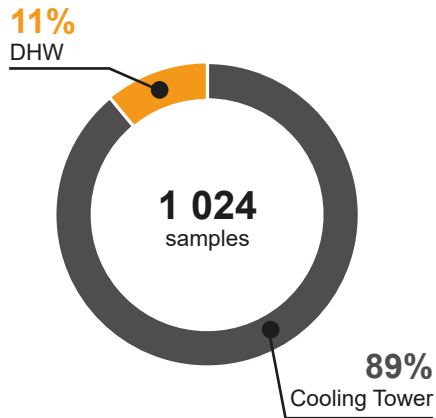
More info

> diamidex.com



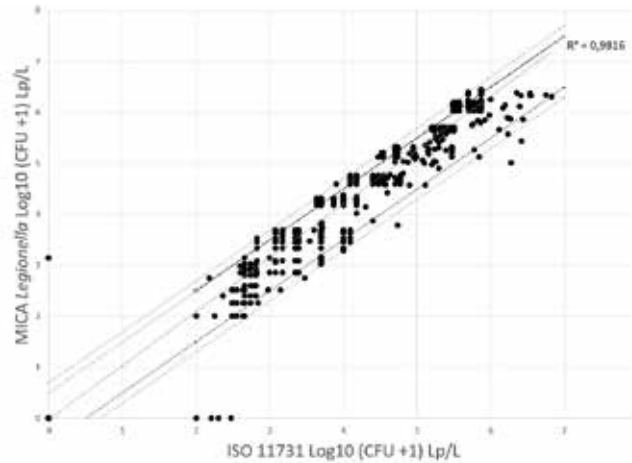
MATRICES TESTED

Domestic hot water (DHW) and Cooling tower water.



COMPARISON WITH ISO 11731

Tested on **1,024** comparisons of domestic water samples and cooling tower water, according to the MICA Legionella and ISO 11731 protocols.



Specificity: 99.6%
Sensitivity: 99.5%
NPV: 98.5%
PPV: 99.9%

INCLUSIVITY / EXCLUSIVITY

SPECIES / SEROGROUPS	NUMBER OF STRAINS	ORIGIN	DETECTION WITH MICA Legionella
<i>L. pneumophila</i> - Serogroup 1	9	ATCC 33152, CIP 107629, CIP 108286, CIP 105349 + 5 environmental strains	+
<i>L. pneumophila</i> - Serogroups 2-15	23	ATCC 33154, ATCC 33155, ATCC 35289, DMS 25225, ATCC 43703 + 18 environmental strains	+
<i>Legionella</i> spp.	15	<i>L. anisa</i> , <i>L. bozemanii</i> , <i>L. cincinnatiensis</i> , <i>L. feeleii</i> , <i>L. geestiana</i> , <i>L. gormanii</i> , <i>L. jordanis</i> , <i>L. longbeachae</i> , <i>L. maceachernii</i> , <i>L. micdadei</i> , <i>L. moravica</i> , <i>L. nagasakiensis</i> , <i>L. spiritensis</i> , <i>L. tucsonensis</i> , <i>L. waltersii</i>	-
Other species	13	<i>Acinetobacter baumannii</i> , <i>Bacillus cereus</i> , <i>Candida albicans</i> , <i>Citrobacter freundii</i> , <i>Escherichia coli</i> Migula, <i>Enterococcus faecelis</i> , <i>Listeria monocytogenes</i> , <i>Pseudomonas aeruginosa</i> , <i>Pseudomonas fluorescens</i> , <i>Staphylococcus aureus</i> , <i>Staphylococcus epidermidis</i> , <i>Klebsiella pneumoniae</i> , <i>Salmonella typhimurium</i>	-

VARIABILITY OF RESULTS

Real cooling tower water sample divided into 10 equal portions and sent to 5 COFRAC laboratories for analysis using the ISO 11371 / NFT 90-431 reference method and 5 analyses with MICA Legionella produced by DIAMIDEX.

