



# Compact Dry™

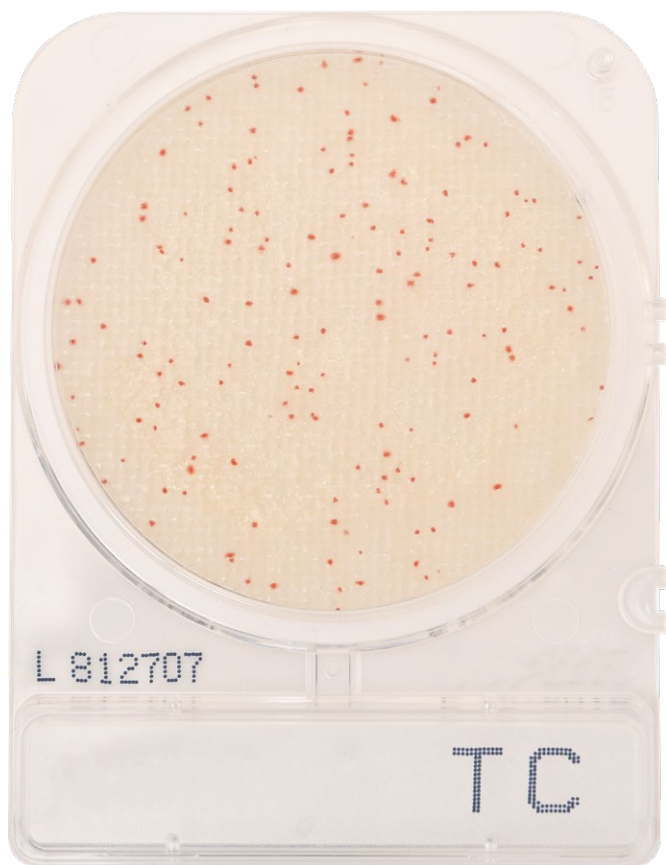
SIMPLE AND EFFECTIVE SYSTEM  
for Colony Counting

# CompactDry™

There is always a better way.

The CompactDry™ plate line presents a variety of organism-specific or total count tests, packaged nicely in a sophisticated and sturdy cassette.

*The benefits are easy to spot.*



AOAC Approved	MicroVal Approved	NordVal Approved
BC, ETB, EC, TC, TCR, YM, YMR, XSA	BC, EC, ETB, SL, TC, YM, YMR, XSA	EC, ETB, TC, YM, YMR, XSA



This product line is designed to save technician time while performing colony counts on Food, Beverage, Cannabis, Cosmetics, Environmental, Meat, and Raw Material samples.

### **RIGID TRANSPARENT CASSETTE WITH REMOVABLE LID**

Keep your colonies intact with space between the media and lid. Easily remove the plastic lid for quick inoculation. Count your colored colonies clearly through the gridded back surface of the cassette.



### **SELF-DIFFUSING MEDIA**

1ml sample dropped in the middle of the plate turns the dry media to gel. The sample will diffuse evenly and automatically on the plate. No need for a spreader, no need for an extra step.



### **DESIGNED TO STACK**

Save precious incubator space with a product that is designed to stack in the incubator with low risk of contamination.



### **ROOM TEMPERATURE STORAGE**

Keep storage simple with plates that come with long shelf lives and can be stored long term at room temperature.



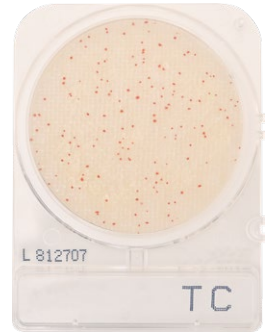
## CompactDry™ TC

### Total Count

For total aerobic viable bacterial count.  
Growing colonies will appear red.

240/pk

54081



## CompactDry™ EC

### *E. coli* and Coliforms

For the isolation and enumeration of coliforms  
and *E. coli*. Coliform colonies will appear red,  
and *E. coli* colonies will appear blue.

240/pk

54082



## CompactDry™ YM

### Yeast and Mold

For the isolation and enumeration of yeast  
and mold. Yeast colonies will appear blue,  
and molds will form cottony colonies with  
characteristic colors.

240/pk

54083



## CompactDry™ YMR

### Yeast and Mold Rapid

For the isolation and enumeration of yeast and  
mold with results in as little as 72 hours. Yeast  
colonies will appear blue, and molds will form  
cottony colonies with characteristic colors.

240/pk

54084





## CompactDry™ TCR Total Count Rapid

For total aerobic viable bacterial count with enumerated results in as little as 24 hours.  
Growing colonies will appear red.

240/pk 54088

---



## CompactDry™ X-SA *Staphylococcus aureus*

For the selective growth, enumeration, and differentiation of *Staphylococcus aureus*.

240/pk 54086

---



## CompactDry™ ETB *Enterobacteriaceae*

For the isolation and enumeration of *Enterobacteriaceae* that will appear magenta in color. Genera of *Enterobacteriaceae* consists of: *Citrobacter*, *Enterobacter*, *Escherichia*, *Klebsiella*, *Morganella*, *Proteus*, *Salmonella*, *Serratia*, *Shigella*, *Yersinia* and more.

100/pk ETB100  
1,400/pk 54055

---



## CompactDry™ SL *Salmonella*

Growing colonies will appear green or blue-green with or without black centers in a yellow background.

240/pk 54085

---

## CompactDry™ PA

### *Pseudomonas aeruginosa*

Recommended for the enumeration of *Pseudomonas aeruginosa* in food samples, feedstuffs, water, cosmetics, and beverages, or material samples from related industries.

100/pk PA100



## CompactDry™ LS

### *Listeria*

For the selective growth, presumptive identification, and enumeration of *Listeria* spp. Growing colonies will appear blue.

100/pk LS100

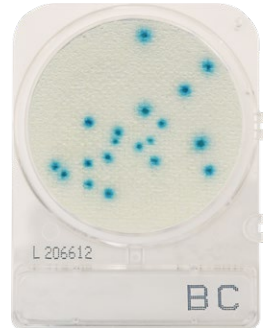


## CompactDry™ BC

### *Bacillus cereus*

For the presumptive detection of *Bacillus cereus* in raw materials, finished products, or on environmental surfaces pertaining to food and other related industries

240/pk XBC100



## CompactDry™ CF

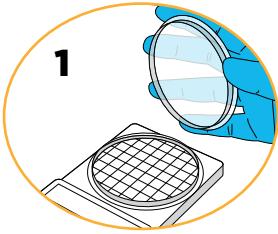
### Coliforms

For the detection of coliforms. Coliforms grow with blue/blue green colonies as the recipe contains the chromogenic enzyme substrate X-GAL. The growth of bacteria other than coliforms is mainly inhibited but in case of growth they form colorless colonies.

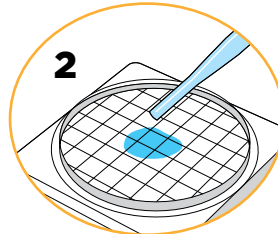
240/pk 54053



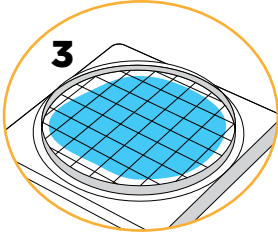
# HOW TO USE



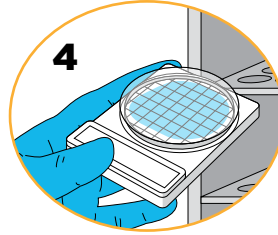
1 Remove protective lid from CompactDry™ plate.



2 Drop 1ml of sample (dilute if necessary) in the middle of dry media.

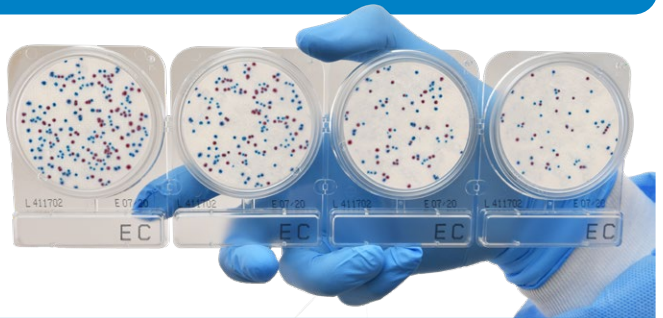


3 Sample diffuses automatically, transforming the dry medium to gel.



4 Re-cap and incubate for prescribed time. Count the number of colonies manually or on the new Wizard™ CompactDry™ Reader, Cat. no. CDR2. (Pg. 7)

# INCUBATION TEMPERATURE & TIME



CompactDry™ Product	Incubation Temperature	Incubation Time
Total Count Rapid	35 °C	24 hrs.
Total Count	35 °C	44-48 hrs.
<i>E. coli</i> & Coliforms	35 °C	20-24 hrs.
Yeast and Mold	25 °C	3-5 days
Yeast and Mold Rapid	25 °C	72 hrs.
<i>Staphylococcus aureus</i>	35 °C	24 hrs.
<i>Enterobacteriaceae</i>	35-37 °C	24 hrs.
<i>Listeria</i>	35-37 °C	24-28 hrs.
<i>Salmonella</i>	41-43 °C	20-24 hrs.
Coliform	35 °C	24 hrs.
<i>Bacillus cereus</i>	29-31 °C	22-26 hrs.
<i>Pseudomonas aeruginosa</i>	35 °C	48 hrs.

# The Wizard™

## CompactDry™ Reader

**The Wizard CompactDry™ Reader**, a small instrument that will make a big impact on reducing the time spent counting colonies by hand.



Cat. no. CDR2

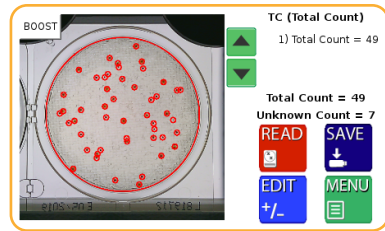
**Easy-to-use:** Flip the switch, select your configuration, insert your CompactDry™ plate(s), select read, and save your results! See how fast that was?

**Designed exclusively for CompactDry™**



## CONSISTENCY WHERE IT COUNTS

The Wizard™ brings precise colony counts to each and every set of plates, eliminating the risk of human error and inconsistency.



## YOUR COLONY COUNT IN SECONDS

Save technician hours on this simple and tedious task to maximize your throughput possibilities.

## SIMPLE IMPLEMENTATION

Easy-to-understand instructions make for simple Standard Operating Procedures, allowing you to easily train your team and begin utilizing automation for your colony counts.

## COMPLIANCE MADE EASY

Make data compliance easy in any lab with several ways to save your test results. Transfer to LIMS software, save directly to USB, or print your data.

# ENVIRONMENTAL MONITORING

## TRIO.BAS™ MINI designed specifically for CompactDry™ media

Regular air monitoring of lab and production facilities is an important step to guarantee hygienic conditions during production and to prolong the shelf-life of final products.

CompactDry™ plates are ready-to-use plates for detection of microorganisms in food and dairy products. CompactDry™ plates may also be suitable in the cosmetics, cannabis, water industries and more. They can be used to detect microbial air contamination in combination with the TRIO.BAS™ air sampler.



### Each kit includes:

- TRIO.BAS MINI air sampler
- Charging cable
- Stainless steel aspirating head
- Protective cover head
- Carrying case
- CompactDry™ plates sold separately

CompactDry Kit, 100 liters/minute BAS255K



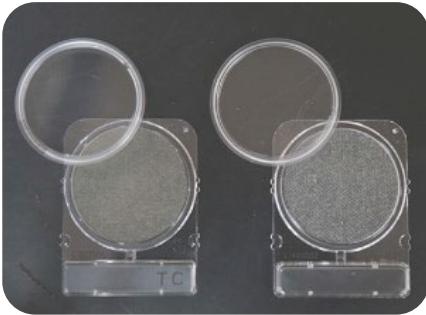
# PASSIVE & ACTIVE AIR SAMPLING

For the settling plate method of air sampling, see the procedure below. However, for more consistent and meaningful results we recommend the use of Active Impact Air Samplers with our TRIO.BAS™ line of instruments. Many regulatory agencies now require the use of active impact air samplers, rather than the passive settling plate method.

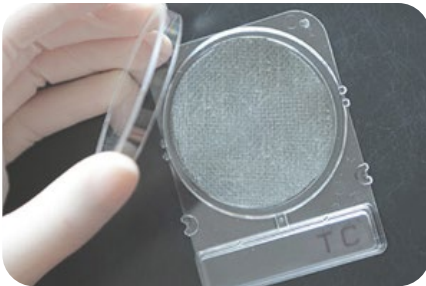
## Passive (Settling Plate)



1. Hydrate CompactDry™ plate with 1ml sterile diluent.



2. Expose plate to air for 15 minutes by removing the lids.



3. Return the lid to the plate. Invert and incubate the plates at specific incubation temperature.

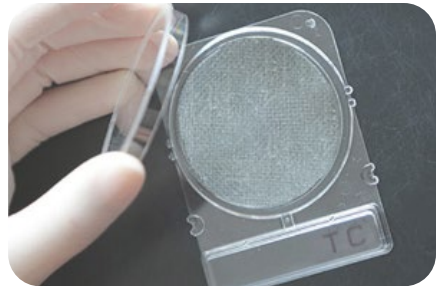
## Active (TRIO.BAS™)



1. Hydrate CompactDry™ plate with 1ml sterile diluent.



2. Load CompactDry™ plate without lid into the TRIO.BAS™ air sampler. Set sampler for desired time then active.



3. Remove plate from sampler and replace the lid. Invert and incubate the plate at specific incubation temperature.

# MEMBRANE FILTRATION



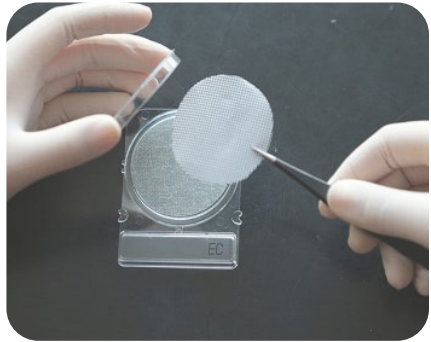
1. Dispense 1ml sterile distilled water onto CompactDry™ plate.



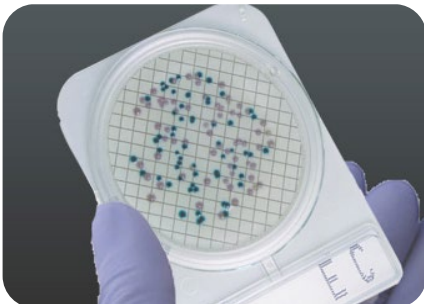
2. Filter sample by filling the sterile chamber with the required amount of liquid sample. Open the vacuum line to start filtration.



3. After filtration, wash the inner surface with 20-30ml sterile distilled water. Repeat 20-30 times. Sartorius Microsart, Cat. no. 168M3MS



4. Transfer the filter paper, trapped side up, to the CompactDry™ plate. Ensure that there are no bubbles between the plate and the filter. Incubate the plates at specific incubation temperature.



5. Read results and count colonies manually or automatically on the Wizard video reader. Cat. no. CDR2

# DILUTION VIALS

## With Hardy Diagnostics, dilution vials are a snap!

The Dilu-Lok™ eliminates the time and money spent on preparing your own dilution vials! Our pre-filled dilution vial is designed especially for the food, dairy, pharmaceutical, and water industries. Our easy to use snap lid vials are filled to 25ml, 90ml, or 99ml with a variety of buffering and enrichment solutions. Each lot is tested for pH, sterility, and fill volume.



Convenient Write-on area



Easy-to-remove, shrink wrap



**Heavy Duty** - Vials are made of sturdy polypropylene with a leak-resistant seal that holds up even during air transport.

**Large Opening** - A wide 45mm opening accommodates most sample sizes. Each vial is clearly marked with a 90ml and 99ml fill line.

**One-Handed** - Flip-top lid allows for easy one-handed opening and closing to make pipetting easier. Saves unnecessary motion! No awkward screw caps or plastic strips to tear off.

**Variety** - Available with peptone water, TAT broth, buffered peptone water, butterfield's buffer, deionized water, phosphate buffer with MgCl, and as an empty, sterile container.

**Leak-Resistant** - Re-engineered for an improved seal. Perforated shrink wrap is easy to remove and ensures product integrity.

# SERIAL DILUTIONS

## Diligent Shaker for use with Dilucup® Elegance!

### by LabRobot

The Diligent Shaker uses orbital rotation to make sure each dilution is thoroughly vortexed. It is activated by either an hands-free optical sensor or the optional foot pedal. The 42 LED indicators light each cup, letting you easily see what dilution well you are in.



### Features:

- Dimensions: 38cm x 29.5cm x 5cm
- 7" touch screen
- Two optical sensors, one at each side
- Can create and store testing templates, assuring standardization of method
- Programming with intuitive software
- 6 rows for 42 cups (7 x 6)
- Removable magnetic tray for 42 cups
- Export data to USB
- Bar code reading (Diligent and Diligent Pro only)
- Able to record sample ID and user ID (Diligent and Diligent Pro only)
- Full connectivity to LIMS (Diligent Pro only)
- Optional Footswitch, Cat. no. 40FS02

### Diligent Shaker Light

Store up to 2 templates. Data retrieval is manual only.

40DGT84LT

### Diligent Shaker Standard Version

Record sample ID, technical or user ID. Bar code scanner capability. Store up to 10 templates. Export data to USB.




40DGT84SD

### Diligent Shaker Pro

LIMS connectivity and traceability for data. Record sample ID, technical or user ID. Bar code scanner capability. Store up to 10 templates.

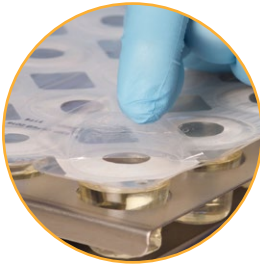
40DGT84PO



-  Long shelf life
-  Sterilized by irradiation
-  Room temperature storage



Easy peel-off film



Sterile, pre-filled diluent



Compact for efficient storage



**Dilucup Elegance BFD (Butterfield's Phosphate Buffer)**

Butterfield's Phosphate Buffer, dilution blank, 9ml fill, ready-to-use cups, 672 (2 x 8 x 42) total cups with 6 cups/row

40DEBFD6

**Dilucup Elegance BPW (Buffered Peptone Water)**

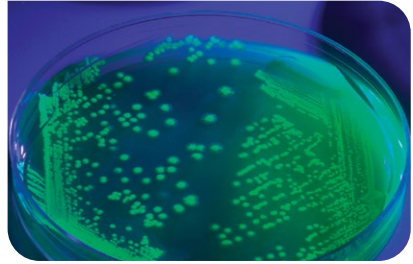
Buffered Peptone Water, dilution blank, 9ml fill, ready-to-use cups, 672 (2 x 8 x 42) total cups with 6 cups/row

40DEBPW6

# CONTROL ORGANISMS

## Microbiologics®

Hardy Diagnostics is proud to work alongside Microbiologics, the leading provider of ready-to-use reference strains for microbiological quality control testing.



## UV·BioTAG™

UV-BioTAG™ microorganisms contain a Green Fluorescent Protein (GFP) marker integrated into the chromosome that produces fluorescence of the culture visible under UV light. This allows for easy differentiation of these control strains from contaminants. Available in swab and vial formats,

UV-BioTAG is an easy-to-use solution for quality control in food labs.

- Qualitative product features instant-dissolve pellet to reduce preparation time
- GFP reporter is integrated into the chromosome to provide superior stability
- Assists labs with investigations of positive test results with quick and reliable differentiation of control strains
- Thoroughly tested to ensure authenticity, stability and compatibility with detection technologies

Description	UOM	Cat. no.
<i>Escherichia coli</i> (O157:H7) EC43 derived from FDA ESC1177 (STEC)	6 swabs	01227UVS
<i>Escherichia coli</i> (O157:H7) EC43 derived from FDA ESC1177 (STEC)	6 vials	01227UVV
<i>Listeria monocytogenes</i> (1/2a) derived from FDA LS808	6 swabs	01249UVS
<i>Listeria monocytogenes</i> (1/2a) derived from FDA LS808	6 vials	01249UVV
<i>Listeria monocytogenes</i> (1/2b) derived from FDA LS810	6 swabs	01248UVS
<i>Listeria monocytogenes</i> (1/2b) derived from FDA LS810	6 vials	01248UVV
<i>Listeria monocytogenes</i> (4b) derived from FDA LS806	6 swabs	01250UVS
<i>Listeria monocytogenes</i> (4b) derived from FDA LS806	6 vials	01250UVV
<i>Salmonella enterica</i> subsp. <i>enterica</i> serovar Senftenberg Sal59 derived from FDA SAL5697	Each	01226UVS
<i>Salmonella enterica</i> subsp. <i>enterica</i> serovar Senftenberg Sal59 derived from FDA SAL5697	6 vials	01226UVV
<i>Salmonella enterica</i> subsp. <i>enterica</i> serovar Typhimurium Sal54 derived from FDA SAL5694	6 swabs	01223UVS
<i>Salmonella enterica</i> subsp. <i>enterica</i> serovar Typhimurium Sal54 derived from FDA SAL5694	6 vials	01223UVV
<i>Shigella flexneri</i> SF84 derived from FDA SHI0552	6 swabs	01224UVS
<i>Shigella flexneri</i> SF84 derived from FDA SHI0552	6 vials	01224UVV



# PIPETTES

Hardy Diagnostics offers plastic, disposable pipettes featuring a one-piece construction. Clear black graduation marks prevent ambiguity and guarantee precise liquid reading.

- Calibration is certified for accuracy (Meets ASTM E934)
- Calibrated to deliver (TD)

## STERILE, INDIVIDUALLY WRAPPED

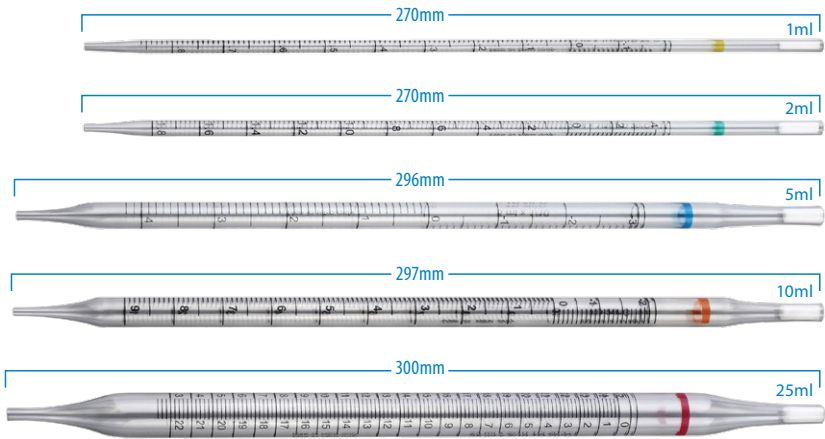
1ml Pipette, 500/case	1700
2ml Pipette, 500/case	1720
5ml Pipette, 250/case	1740
10ml Pipette, 200/case	1760
25ml Pipette, 100/case	1780

## STERILE, 25 PER PACK

1ml Pipette, 1,000/case	1710
2ml Pipette, 1,000/case	1730
5ml Pipette, 375/case	1750
10ml Pipette, 250/case	1770

## NON-STERILE, 25 PER PACK

1ml Pipette, 1,000/case	1715
2ml Pipette, 1,000/case	1735
5ml Pipette, 375/case	1755
10ml Pipette, 250/case	1775



## PORTABLE PIPETTE CONTROLLER

A rechargeable electronic pipetting aid designed for use with glass or plastic serological pipettes in the 0.1 to 100ml volume range.

- Lightweight and ergonomically designed for effortless pipetting.
- Safety valve and replaceable membrane filter provides protection against contamination
- Removable nose cone is autoclavable



Each 3380

# COMPANION PRODUCTS

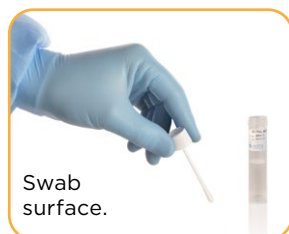
## EnviroTrans™ ENVIRONMENTAL SWAB RINSE KIT

This ready-to-use swab and tube is pre-filled with your choice of sampling diluents. Simply remove the cap, collect your sample by swabbing the surface, recap, and send to the lab. The solution can then be inoculated onto a CompactDry™ plate. Excellent for detection or enumeration of microorganisms from environmental surfaces and hard to reach areas.

Neutralizing Buffer 2ml, 20/box	SRK20
5ml, 20/box	SRK15
Lethen Broth 5ml, 20/box	SRK25
Saline 0.85% 2ml, 20/box	SRK30
D/E (Dey-Engley) Neutralizing Broth 5ml, 20/box	SRK45
Neutralizing Saline 5ml, 20/box	SRK55
Butterfield's Phosphate Buffer 1ml, 20/box	SRK90



**PRE-MOISTENED,  
READY-TO-USE**



Swab  
surface.



Pipette  
1ml to the  
Compact  
Dry™ plate.

## WHIRL-PAK®



A special gusset creates a flat bottom when the sample is placed in the bag, allowing the bag to stand completely on its own. Easily write with ballpoint pen, pencil, or felt tip marker.

### WRITE-ON/STAND-UP BAGS

4 oz, 500/box	B01364WA
18 oz, 500/box	B01365WA

### WRITE-ON BAGS (non stand-up)

18 oz, 500/box	B01065WA
24 oz, 500/box	B01297WA
55 oz, 500/box	B01195WA

# Confirm the identification of CompactDry™ results with MALDI-TOF Mass Spectrometry

## Autof ms1000

The Autof ms1000 provides automated, high-speed and high-confidence identification and taxonomical classification of bacteria, yeasts, fungi, and filamentous fungi based on proteomic profiling. Numerous studies have demonstrated the higher accuracy, faster time-to-result, and lower cost provided by MALDI-TOF technology when compared to classical methods.

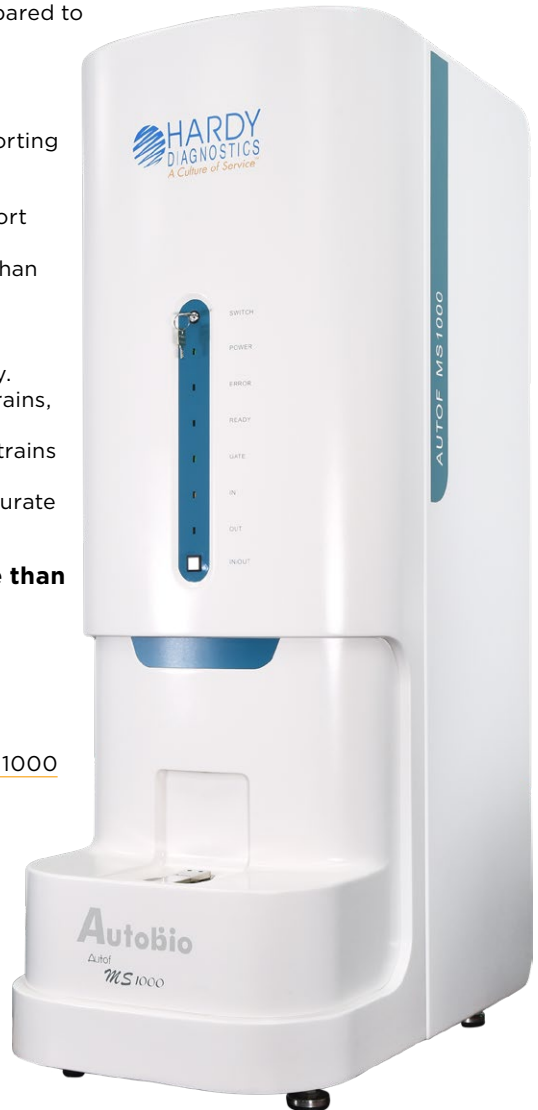
### Features:

- Faster time-to-result when compared to conventional methods and PCR
- Cost effective
- Robust, intuitive software, supporting 21 CFR part 11 compliance
- LIMS/LIS connectivity and support
- Can identify 96 samples in less than 20 minutes hands-on time

The Autof ms1000 has the most expansive database in the industry. Created with more than 15,000 strains, each with more than 5 reference spectra, averaging more than 10 strains per species, the database of the Autof ms1000 provides highly accurate results.

**Local database includes more than 1,000 genera, 5,000 species, and 16,000 strains.**

Each MS1000





# HARDY DIAGNOSTICS

*A Culture of Service™*

**40** MORE THAN  Years of  
Bringing You  
A Culture of Service

 **100%**  
Employee Owned

**MADE IN USA**

**ESTABLISHED  
1980**

 Hardy Diagnostics  
donates 1% of each  
sale to charity.

 **ISO  
13485**  
Medical Devices  
Quality  
Management

FM 572526

Hardy Diagnostics has a Quality Management System that is certified to ISO 13485 and is a FDA licensed medical device manufacturer.

### Headquarters

1430 West McCoy Lane  
Santa Maria, CA 93455  
800.266.2222  
Sales@HardyDiagnostics.com  
HardyDiagnostics.com

### Distribution Centers

Santa Maria, California  
Olympia, Washington  
Salt Lake City, Utah  
Phoenix, Arizona  
Dallas, Texas  
Springboro, Ohio  
Lake City, Florida  
Albany, New York  
Raleigh, North Carolina



# PREMIER®

Contract # PP-LA-640 | **Contracted Supplier**



# Contract Holder

Contract # 47QSWA22D0077